

Co-VIP STUDIO

COVID-19-Focused Virtual Patient Engagement Studio

WHAT IS THE CoVIP STUDIO?

an infrastructure to allow investigators to reach & engage diverse nationwide stakeholders in COVID-focused patient-centered research

WHAT IS LONG COVID?

People with Post-COVID Conditions can have a wide range of symptoms that can last weeks, months, or even years after infection



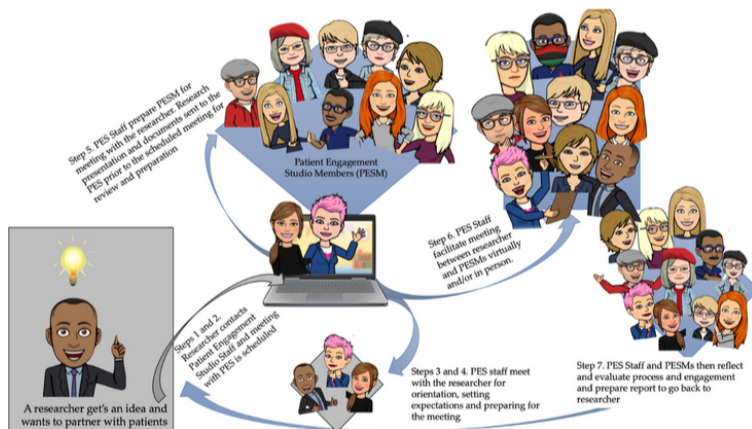
WHERE ARE OUR CoVIP MEMBERS?

CoVIP members come from 17 states across the United States



TRAINING AND TEAM-BUILDING SESSIONS

a series of 8 session trained Co-VIP members to build their knowledge, competencies, and abilities to be meaningful partners in the research process



REVIEW SESSION PROCESS

Each CoVIP member should review at least 5 projects

Source: Fleming et al. (2021). Patient engagement in fertility research: Bench research, ethics, and social justice. Research Involvement and Engagement, 7(1), 1-11

PATIENT EXPERTS

11 Patient Experts completed **5+** sessions

10 PEs exceeded minimum needed sessions

retention rate **80%**

92% session completion rate

RESEARCH REVIEW SESSIONS' TITLES

- Sleep, Cognition, and Pain bundle vs. ERAS-cardiac [enhanced recovery after cardiac surgery] for postoperative delirium (POD)
- BREATHE: Feasibility and Adherence of Yogic Breathing and Guided Meditation for Enhancing Wellness among Post-COVID (PCS) Patients
- PREcision VENTilation to attenuate Ventilation-Induced Lung Injury (PreVent VILI Trial)
- Build up a community-based prospective cohort to study long COVID and resilience in African American population
- Addressing Rural Maternity and Obstetrics Minority Health Equity via Telehealth (RMOM-HEALTH)
- Collection of SARS CoV-2 Serum and Secretions for Countermeasure Development - Session 1
- Confronting the Overdose Epidemic by Engaging Patients to Improve Medical Toxicology Research
- Ambulatory Care Management Patient Scripting
- Electrical Stimulation for Pain and Fatigue from Long-COVID
- Collection of SARS CoV-2 Serum and Secretions for Countermeasure Development - Session 2
- APPLE: Approaches to Performance of PICU Liberation Elements
- Improving SARS-CoV-2 vaccination in Prisma Health Emergency Departments using an adaptive educational intervention
- Women's Perceptions of and Needs Surrounding Maternal Functioning
- Get Connected SC - Internet for All Survey
- Maternal aRMOR: Wearable protection for early hemorrhage detection
- Diversity in massage: a visual content analysis of Australian massage therapists' and general practitioners' website pages
- Measuring Treatment Success for Orthopaedic Conditions
- Enhanced Home Visiting Program to Address Structural Inequities and Reduce Racial Disparity in Maternal Morbidity and Mortality
- CURE Drug Repurposing Collaboratory
- Investigators' Workshop on Patient Engagement in Research

20

sessions

75%

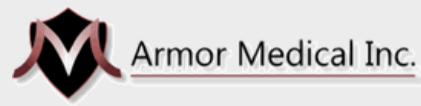
non-USC

32 investigators present at sessions

55 % outside South Carolina

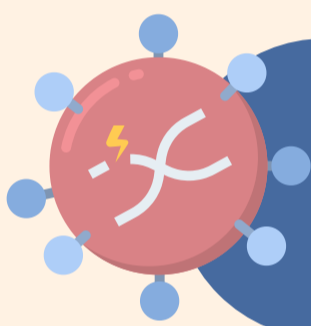
RESEARCH REVIEW SESSIONS

Investigators from 15+ institutions presented to the CoVIP Panel



PATIENT-CENTERED RESEARCH QUESTIONS

During the engagement process, we gathered patient-generated "wonderings" that are used to create research questions.



VIRUS VARIANTS

"Are adults infected with the original SARS-CoV-2 virus more likely to develop long-haul COVID compared to those infected with a variant of SARS-CoV-2?"

MULTIPLE INFECTIONS

"Are adults with multiple SARS-CoV-2 infections more likely to develop long-haul COVID compared to those who only experienced one SARS-CoV-2 infection?"



BRAIN FOG

"In adults with long-haul COVID experiencing brain fog/cognitive changes, how effective is neurological/brain rehabilitation compared to hyperbaric chamber usage in improving brain fog symptoms?"

PROVIDER EDUCATION

"Does education for providers on ways to improve patient-provider relationships compared to education about Long-haul COVID etiology improve the quality of life and condition symptoms for patients with long Covid?"



Patient Engagement Studio
UNIVERSITY OF SOUTH CAROLINA



facebook.com/PatientEngagementStudio/



linkedin.com/company/uofsc-patient-engagement-studio/

Research reported in this infographic was funded through a Patient-Centered Outcomes Research Institute (PCORI) Award (EASC-COVID-00293). The statements in this publication are solely the responsibility of the authors and do not necessarily represent the views of the Patient-Centered Outcomes Research Institute (PCORI), its Board of Governors or Methodology Committee.